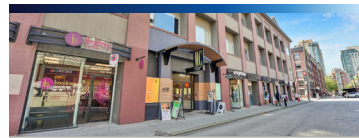


**TOA DEVELOPMENT SITE | VANCOUVER BC**



- Granville Island Village; 180 View of Downtown
  - 97,666 SF; Est. 238,898 to 360,750 BSF
- Eugen Klein, Dean Thomas, Nahal Gamini

**RETAIL SPACE FOR SALE | VANCOUVER BC**



- 109 - 1058 Mainland St, 710 SF
  - High traffic retail location in heart of Yaletown
- \$1,399,000 **Brian Oh**

**LAND ASSEMBLY | COQUITLAM BC**



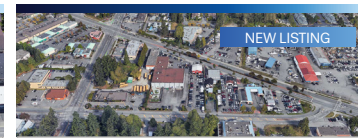
- Hansard Crescent, Coquitlam Centre
  - Allowable up to 4 or 5 FAR
- Amir Kamyab-Nejad  
• 1.63 Acres **Olga Tarasenko, Dean Thomas**

**LAND ASSEMBLY | COQUITLAM BC**



- 740-754 Como Lake Ave, 758 Guiltner St
  - TOA Site, 800m from Burquitlam Skytrain
- 38,340 SF **Olga Tarasenko, Eugen Klein**

**LAND ASSEMBLY | SURREY BC**



- 160st & Fraser TOA Site, rapid transit oriented.
  - 30 to 36 storey redevelopment opportunity
- Fleetwood OCP **Eugen Klein, Nahal Gamini**

**STRATA WINDUP | VANCOUVER BC**



- 1070 Nelson St, 22, prime west-end lot
  - Size: ~8,652 SF, total unit area: 15,487 SF
- 22 Units **Anna C Lu, Eugen Klein**

**MIXED USE BUILDING | WHITE ROCK BC**



- 15791 Marine Drive, corner lot
  - Mixed use ~\$21,000 rental income
- Redevelopment potential **Pranjay Jain**

**TOWNHOUSE ASSEMBLY | NEW WESTMINSTER BC**



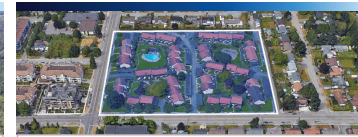
- Garrett St. & Wilson St; 101,701.13 SF
  - 3.5 - 4.0 FSR; TOA site next to Braid Station
- Senior Care, Residential Twnhse **Eugen Klein**

**MASTERPLAN DEVELOPMENT | KITMAT, BC**



- Minette Bay Lodge, 77 Acres, Waterfront
  - Masterplan Potential including Hospitality, Village Style Housing Complex
- Eugen Klein**

**LAND ASSEMBLY | SURREY BC**



- 5850 177B St, central location to all amenities
  - Urban Zoning in Cloverdale Town Centre Plan
- 7.4 Acres **Michael Coulter**

**HIGH-RISE DEVELOPMENT LAND | MAPLE RIDGE BC**



- 20115-20123 Patterson Ave, 0.69 Acres
  - Transit Oriented, Development Potential
- 120,466 SF **Dmytro Chernysh, Alex Kwong**

**DEVELOPMENT LAND | MISSION BC**



- 7330 Horne St, ~9,286 SF, 4.6 FSR
  - 6 Storey wood frame, DP Ready
- Dean Thomas**  
• NCP: Mission Core **Michael Coulter**

**LAND ASSEMBLY | PORT COQUITLAM BC**



- 2425 Shaughnessy St, downtown core
  - OCP: High Density Apartment Residential
- 15 Units **Amir Kamyab-Nejad, Dean Thomas**

**BUSINESS FOR SALE | BURNABY BC**



- Franchised Pizza Store, avg 70k+ monthly sales
  - Steady foot traffic, loyal customer base
- \$650,000 **Sunny Oberoi**

**BUSINESS FOR SALE | DELTA BC**



- Ricky's/Famoso Pizzeria, Dual Brand Opportunity
  - 5,097 SF, 2-5239 Ladner Trunk Road
- \$775,000 **Sunny Oberoi**

**INDUSTRIAL LAND | ROSELDALE BC**



- 54370 Bridal Falls Rd; Lots Size: 10.6 Acres
  - Zoning: Industrial (Sawmill), Hwy 1 Access
- Dmytro Chernysh, Eugen Klein**

**OFFICE SPACE FOR LEASE | CHILLIWACK BC**



- 101-44981 Commercial Court, prime area
  - 10 Offices, 2 bathrooms, full kitchen, work areas
- 5,950 SF **Dmytro Chernysh, Alex Kwong**

**COMMERCIAL BUILDING FOR SALE | SECHLT BC**



- 5651 Cowrie Street, 5 Separate units
  - Lot size: 15,039.12 SF, Building size: 6,853 SF
- Dual frontage **Dmytro Chernysh, Alex Kwong**

**OFFICE/RETAIL FOR LEASE | CHILLIWACK BC**



- 45938 Wellington Avenue, 10,228 SF
  - Located in the city core of Chilliwack
- C-3 Zoning, \$23/SF **Anthony Ibhaha**

**LAND ASSEMBLY | PORT MOODY BC**



- Edward Crescent & Clearview Drive
  - 27 lots, 4.70 acres, tier 2 TOD site
- Up to 4 FSR **Michael Coulter, Dean Thomas**

**RIVERFRONT INN MOTEL | QUESNEL BC**



- 856 Front St, 25 rooms, C-4 Zoning
  - Updated zoning allows drive-thru restaurant
- \$1,698,000 **Eugen Klein, Sunny Oberoi**

**RETAIL BUILDING | BOWEN ISLAND BC**



- 566 Artisan Lane; Zoning: AS; 5,448 SF
  - Rental Units: 15 (13 Commercial, 2 Residential)
- Building: 7,808 SF; \$4,100,000 **Eugen Klein**

**MOBILE HOME PARK | PORT MCNEILL, BC**



- 1 Alder Bay Drive; 29 Acres, 121 RVs
  - Full City Services, 43 Slip Marina; \$5,250,000
- Eugen Klein**

**MOBILE HOME PARK | REVELSTOKE BC**



- 978 Lundell Rd, 2 Acres, well maintained
  - 14 Pads, city water, septic
- \$899,000 **Eugen Klein**

**MOBILE HOME PARK | PRINCE GEORGE BC**



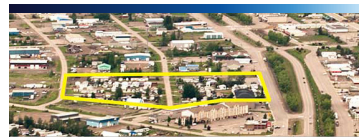
- 7817 Hwy 97 S, 21.42 Acres, 132 Units
  - City water/sewer, 40+ age restriction
- \$7,995,000 **Eugen Klein**

**MOBILE HOME PARK | BLACK CREEK BC**



- 2157 Regent Rd, Saratoga Beach
  - 22.11 Acres, 42 Pads,
- \$5,799,000 **Eugen Klein**

**MOBILE HOME PARK | FORT NELSON, BC**



- 4.8 Acres, 48 Pads, 7.5% Cap Rate
  - Central to All Essential Amenities
- Water, Sewer, Waste, \$799,000 **Eugen Klein**

**MOBILE HOME PARK | NELSON, BC**



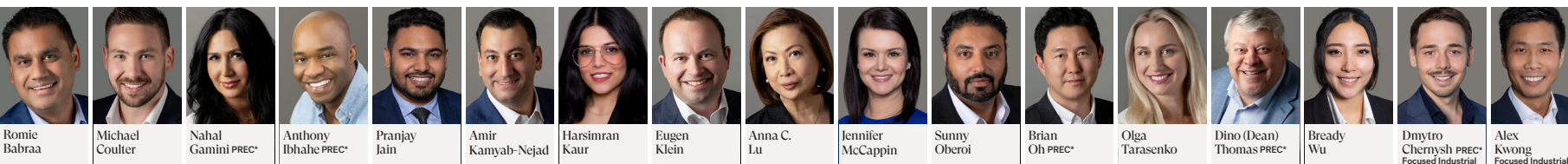
- 900 W Gore St; 6.08 Acres, Full City Services
  - 45 Pads Recent Capital Upgrades;
- \$3,100,000 **Eugen Klein**

**MOBILE HOME PARK | COURTENAY BC**



- 2140 20th street, 4,705 acres
  - Full city services, no vacancy
- \$2,850,000 **Eugen Klein**

For all exclusive mobile home park listings, visit [mobilehomeparks.ca](http://mobilehomeparks.ca)



Romie Babraa | Michael Coulter | Nahal Gamini PREC\* | Anthony Ibhaha PREC\* | Pranjay Jain | Amir Kamyab-Nejad | Harsimran Kaur | Eugen Klein | Anna C. Lu | Jennifer McCappin | Sunny Oberoi | Brian Oh PREC\* | Olga Tarasenko | Dino (Dean) Thomas PREC\* | Braddy Wu | Dmytro Chernysh PREC\* Focused Industrial | Alex Kwong Focused Industrial